

BDCOM 2605 Router

— A Hi-performance, Enterprise Class Broadband Router

As the newest high-end router proudly presented by Shanghai Baud Data Communication Co., Ltd. (BDCOM), BDCOM 2605 has achieved high performance, high density and usability at a very competitive per-port cost. Its industry-leading maintainability and manageability brings hi-performance broadband service to users' hand for easy access.

BDCOM 2605 utilizes the super-fast IPX embedded CPU, provides 5 10/100M TX Ethernet ports, to meet various needs for broadband access routers, including those of telecom carriers, large- and medium-sized enterprises, broadband communities, and VPN projects, etc. It supports up to 500 concurrent network users in a NAT-enabled environment.



BDCOM 2605

Features

High Performance and Reliable Design

- Advanced design and high quality. Reliable performance in bad environments

Access Options

- Support all mainstream WAN access options
- Support different carrier access options based on policy-routing and select connection by yourself
- Support ADSL. Optical Fibre, Cable, Ethernet, etc.

Loading Balance

- Support policy-routing based on destination IP, source IP, flow and routing weight, etc.

Management

- Support WEB, Series port, Telnet and SNMP
- Port mirroring. Monitor data and other information

ARP

- Auto-scan LAN, and add the corresponding relationship between IP and MAC address to static ARP.
- Static ARP in LAN and Dynamic learning ARP in WAN.

Firewall

- Efficient built-in firewall. Monitor all packets from Internet and filter illegal request to LAN server, hack's scan to LAN IP address and ports.

- Prevent DOS/DDOS attack.

Network Management

- Service control by IP address, protocol, port, MAC address, and/or time. E.g. online chat restriction during working time.

NAT

- Restrict the number of NAT link per PC in LAN or the whole network.

Real Time Monitor

- Monitor flow and users in LAN, find abnormal user or other situations.

Virtual Server

- Support private server in LAN to protect real server.

DMZ

- Support DMZ area. And protect the server in this area.

Bandwidth Control

- Restrict different bandwidth according to different IP.

VPN

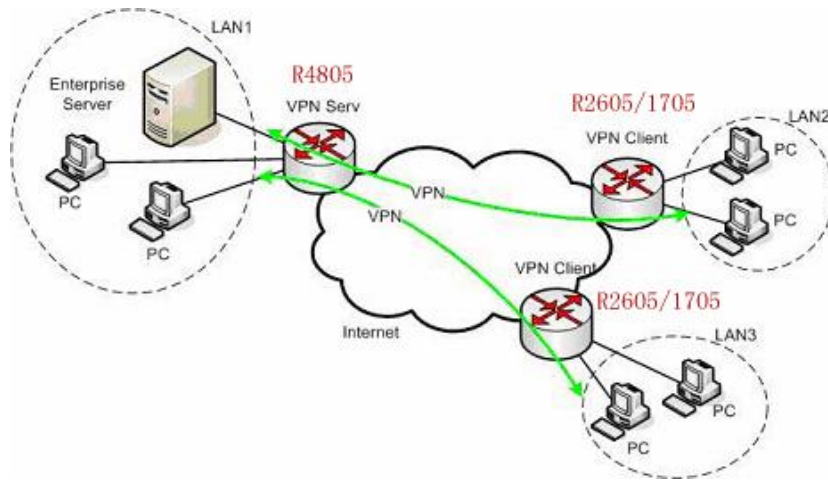
- Support L2TP, IPSec, PPTP or their combinations, providing a perfect solution for remote access and VPN in SMB's.
- Support dynamic VPN.

Specifications

| | |
|------------------------|--|
| Processor | Inter IXP 266Mhz |
| SDRAM | 32 M |
| Flash | 4 M |
| Boot ROM | 512 K |
| Packet Forwarding Rate | 150 Kbps |
| Port (RPU) | 5 * 10/100M Fast Ethernet Ports 1 * Console Port |
| Dimensions (L × W × H) | 340 mm × 200 mm × 44 mm |
| Power Supply | AC: 100~240V, 47 ~ 63 Hz, 1A/230V; DC: -36 ~ -72 V, 1.5A |
| Power Consumption | 60 W (Max.) |
| Temperature | Operating: 0 ~ 40°C, non-operating: -20 ~ 65°C |
| Humidity | Operating: 10 ~ 85%, non-operating: 5% ~ 95% (no condensing) |

Applications

1. SMBs' VPN Application



2. SMBs' Internet Application

